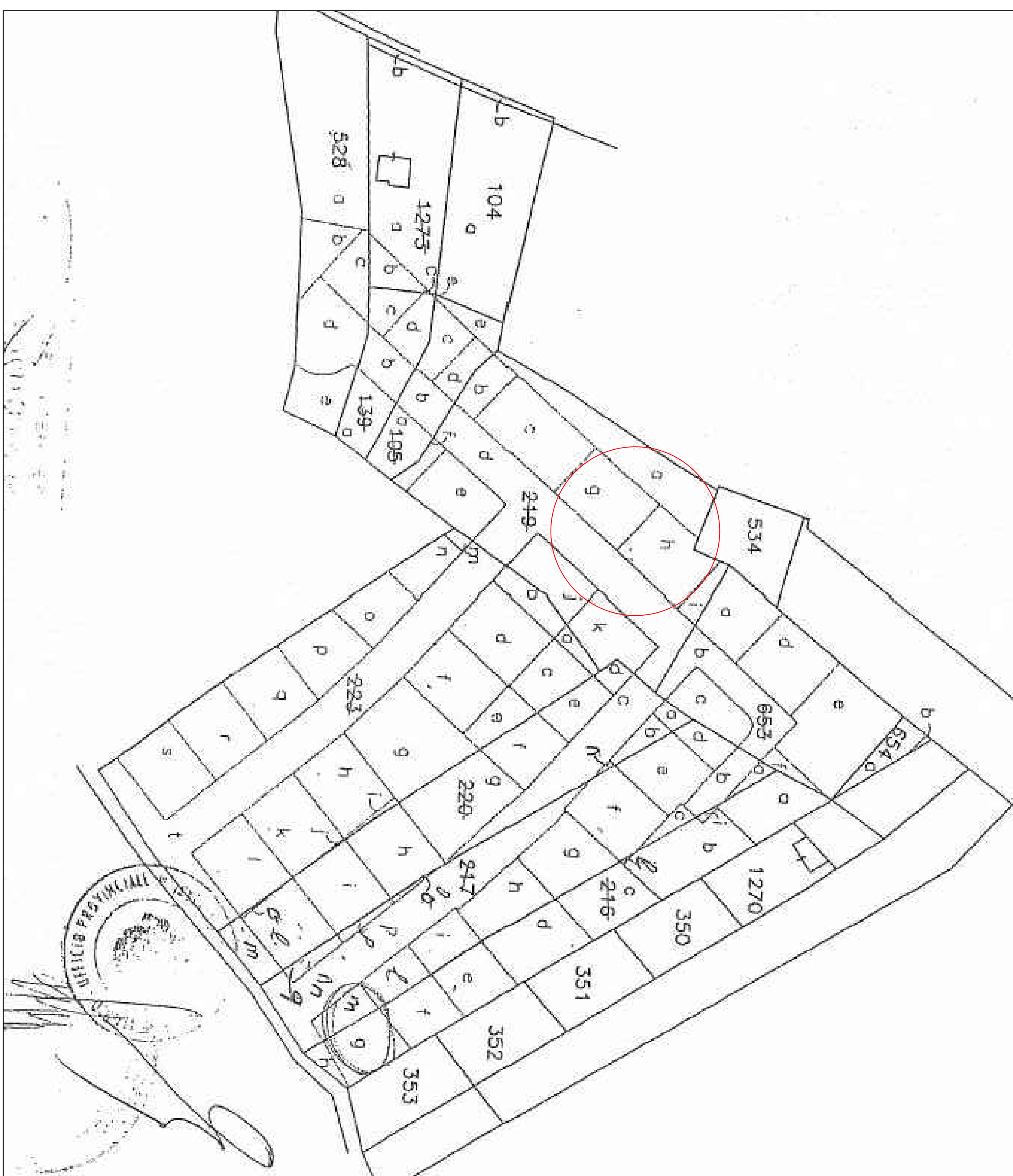


STRALCIO CATASTALE DELLA LOTTIZZAZIONE ALLEGATO ALLA CONVENZIONE

Scala 1:1000

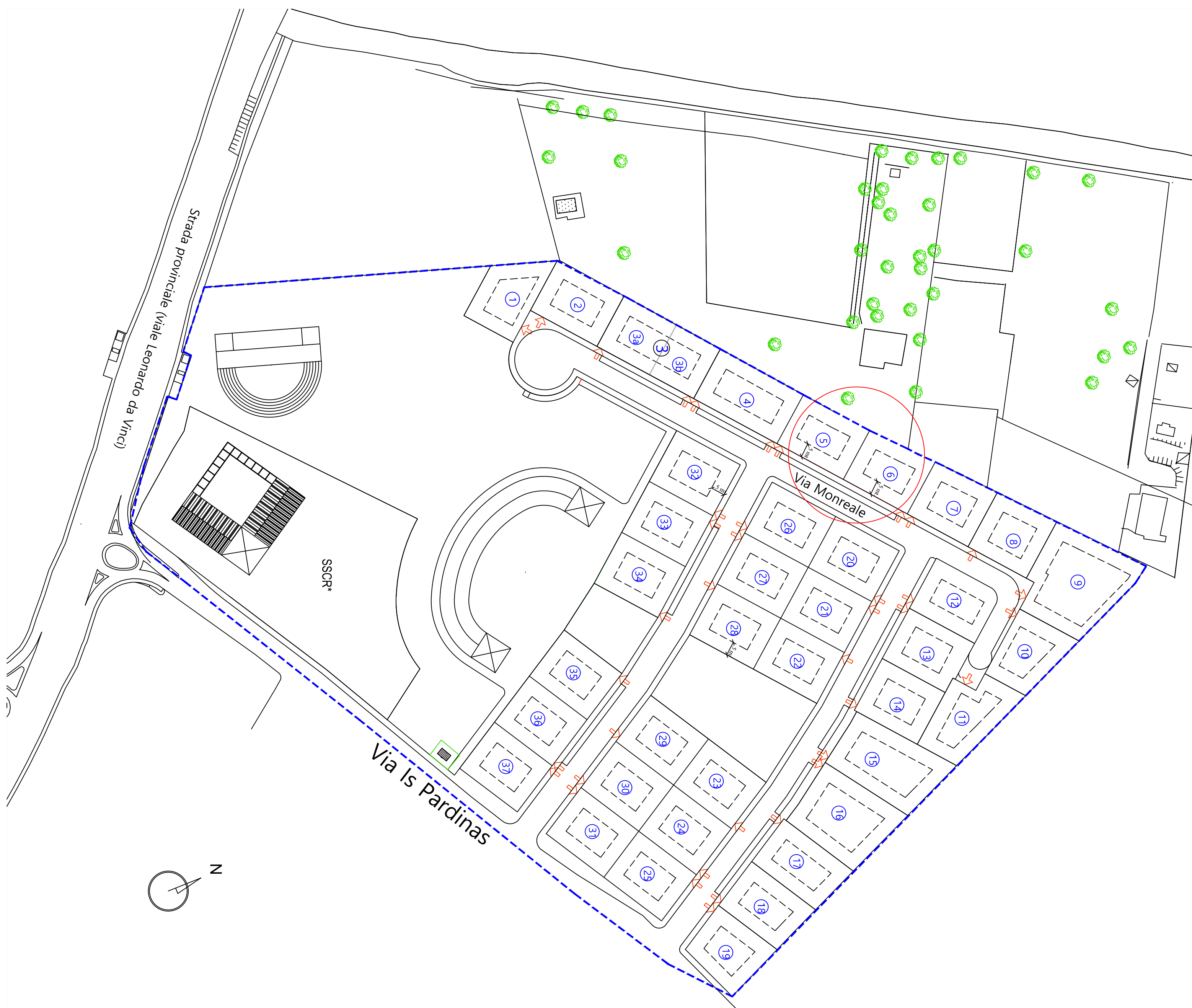


INDIVIDUAZIONE LOTTI E PERIMETRI ISCRITTORI (Tav.7)

APPROVATA CON DELIBERA DEL CONSIGLIO COMUNALE N° 101 DEL 24/06/2004 E N° 62 DEL 31/03/2005

LOTTIZZAZIONE "COSTA ALTA FOXI"

Scale 1:1000

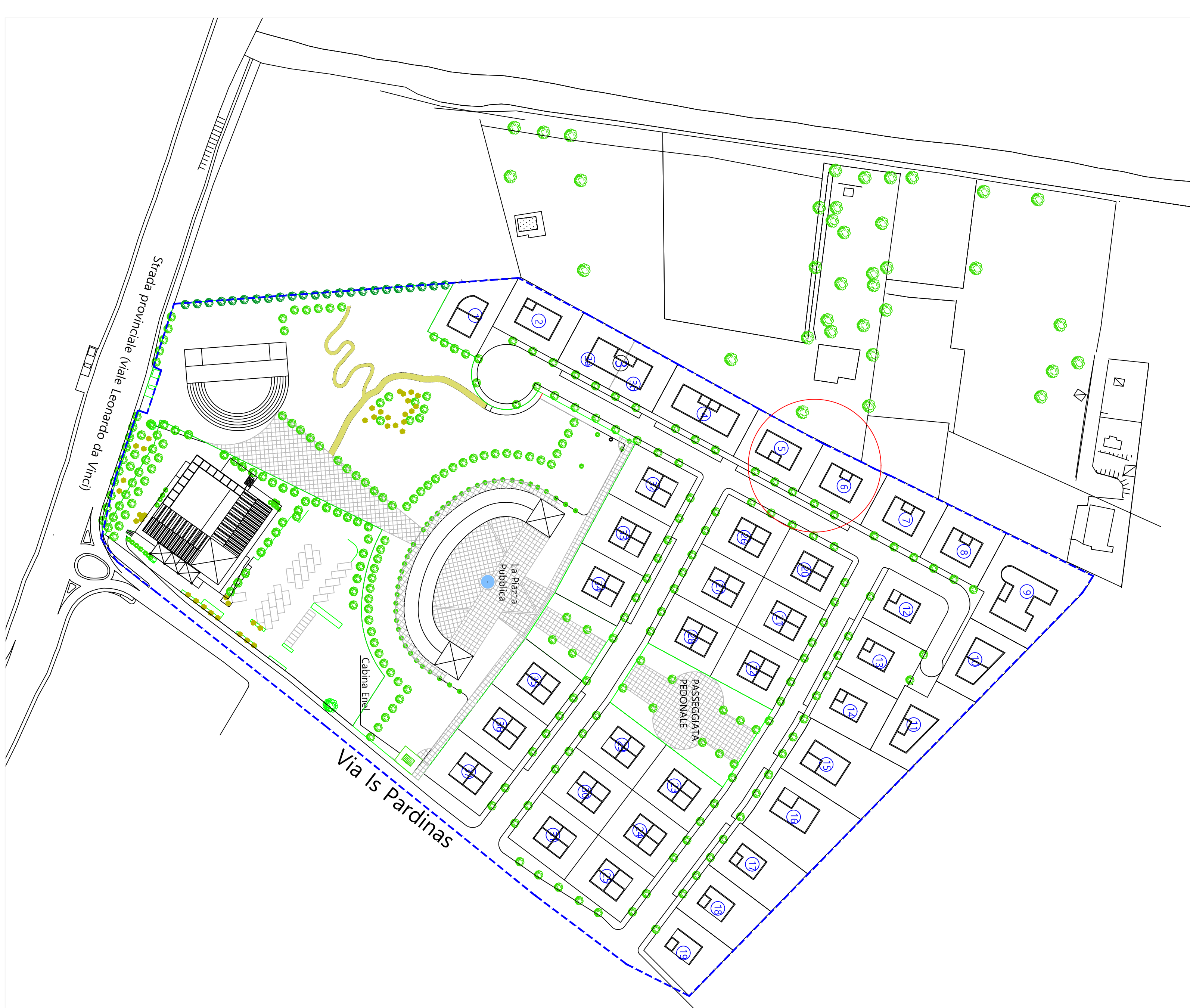


PLANIVOLUMETRICO (TAV.8)

APPROVATO CON DELIBERA DEL CONSIGLIO COMUNALE N° 101 DEL 24/06/2004 E N° 62 DEL 31/03/2005.

LOTTIZZAZIONE "COSTA ALTA FOXI"

Scale 1:1000



ELENCO LOTTI

Unit	SO ₂ conc. ppm	Index benzene	Vol. naphthalene	DMS
1	50.0	0.70	350.0	None
2	52.67	0.70	384.47	None
3	40.21	0.70	284.67	Low level
3a	38.02	0.70	272.32	None
4	65.63	0.70	445.54	None
5	50.0	0.70	350.0	None
6	50.0	0.70	350.0	None
7	50.0	0.70	350.0	None
8	50.0	0.70	350.0	None
9	100.00	0.70	700.0	None
10	50.0	0.70	350.0	None
11	60.13	0.70	422.19	None
12	50.0	0.70	350.0	None
13	50.03	0.70	350.72	None
14	50.50	0.70	352.45	None
15	80.00	0.70	592.80	None
16	79.00	0.70	555.80	None
17	52.62	0.70	382.52	None
18	50.0	0.70	350.0	None
19	50.0	0.70	350.0	None
20	50.00	0.70	350.0	None
21	50.00	0.70	350.0	None
22	50.53	0.70	350.37	None
23	50.00	0.70	350.0	None
24	50.00	0.70	350.0	None
25	50.00	0.70	350.0	None
26	50.00	0.70	350.0	None
27	50.00	0.70	350.0	None
28	50.00	0.70	350.0	None
29	50.00	0.70	350.0	None
30	50.00	0.70	350.0	None
31	50.00	0.70	350.0	None
32	50.00	0.70	350.0	None
33	50.00	0.70	350.0	None
34	50.00	0.70	350.0	None
35	50.00	0.70	350.0	None
36	50.00	0.70	350.0	None
37	50.00	0.70	350.0	None
38	50.00	0.70	350.0	None
39	50.00	0.70	350.0	None
40	50.00	0.70	350.0	None
41	50.00	0.70	350.0	None
42	50.00	0.70	350.0	None
43	50.00	0.70	350.0	None
44	50.00	0.70	350.0	None
45	50.00	0.70	350.0	None
46	50.00	0.70	350.0	None
47	50.00	0.70	350.0	None
48	50.00	0.70	350.0	None
49	50.00	0.70	350.0	None
50	50.00	0.70	350.0	None
51	50.00	0.70	350.0	None
52	50.00	0.70	350.0	None
53	50.00	0.70	350.0	None
54	50.00	0.70	350.0	None
55	50.00	0.70	350.0	None
56	50.00	0.70	350.0	None
57	50.00	0.70	350.0	None
58	50.00	0.70	350.0	None
59	50.00	0.70	350.0	None
60	50.00	0.70	350.0	None
61	50.00	0.70	350.0	None
62	50.00	0.70	350.0	None
63	50.00	0.70	350.0	None
64	50.00	0.70	350.0	None
65	50.00	0.70	350.0	None
66	50.00	0.70	350.0	None
67	50.00	0.70	350.0	None
68	50.00	0.70	350.0	None
69	50.00	0.70	350.0	None
70	50.00	0.70	350.0	None
71	50.00	0.70	350.0	None
72	50.00	0.70	350.0	None
73	50.00	0.70	350.0	None
74	50.00	0.70	350.0	None
75	50.00	0.70	350.0	None
76	50.00	0.70	350.0	None
77	50.00	0.70	350.0	None
78	50.00	0.70	350.0	None
79	50.00	0.70	350.0	None
80	50.00	0.70	350.0	None
81	50.00	0.70	350.0	None
82	50.00	0.70	350.0	None
83	50.00	0.70	350.0	None
84	50.00	0.70	350.0	None
85	50.00	0.70	350.0	None
86	50.00	0.70	350.0	None
87	50.00	0.70	350.0	None

* servizi strettamente connessi con la residenza

SSCR*	537.73	0.75	4028.80
Gas	100		
Cal. Enel	52		

QUARTU SANT'ELENA

IN SOSTITUZIONE DELLA TAV. 7 DEL PIANO DI LOTTIZZAZIONE
PRECEDENTEMENTE APPROVATA



INDIVIDUAZIONE LOTTI E PERIMETRI ISCRITTORI

SITUAZIONE APPROVATA CON DELIBERA DEL CONSIGLIO COMUNALE N° 101 DEL 24/06/2004 E N° 62 DEL 31/03/2005

CAZIONE

Quartu S.E. - Via Monreale lotti n° 5-6

Catasto terreni - Foglio 35 mappali 1574 - 157

OGGETTO	DATA	SCALA
Consegna	Giugno 2024	Varie

COMMITTENTE	PROGETTISTA	TAVOLA
Sec. C.I.C.A. srl	Ing. Maurizio Congiu	2 SOSTITUISC TAV.7

EDILIZIA - URBANISTICA - IMMOBILIARE
VIA DOMINICCA 14/A 05045 GUARNI, S. ELENA
Omnis
P. IVA 01801790722